



February 2010 Newsletter



February 2010 Arts Calendar

(An asterisk* denotes Arts Events funded by a Prairie Lakes Grant.)

Feb. 1-10 "Twitter: Oh the Inanity!" Paintings by ann e. judkins - 30 paintings based on one month of Tweets, at the Eide Bailly Community Art Gallery, 1911 Excel Drive, Mankato. www.eidebailly.com

Feb. 1-12 Eric Ouren sculpture exhibition at Ylvisaker Fine Arts Center, Bethany Lutheran College, 700 Luther Dr., Mankato. Gallery hours: Sun.-Thurs. 1-9 p.m., Fri. & Sat. 1-8 p.m. (507) 344-7364 or www.blc.edu/studioart

***Feb. 1-13** Exhibit by Allison Roberts, Fiber Artist from Mankato at the Waseca Art Center, 410 N. State Street, Gallery hours: Tues.-Fri. 10 a.m.-4 p.m. and Sat. 10 a.m.-2 p.m. (507) 835-1701 or www.wasecaartscouncil.org

***Feb. 1-21** Liz Madsen, "Reflectivity", a collection of Image Transfer Images will be on display at the Arts Center of Saint Peter. Gallery hours: Tues.-Sun.: 1-5 p.m., Thurs.: 1-8 p.m., 315 South Minnesota Ave., St. Peter. Contact: (507) 931-3630, info@artscentersp.org or www.artscentersp.org (Liz received an Emerging Artist Grant from Prairie Lakes in 2009.)

***Feb. 2-27** John Cartwright ink drawings focusing on railroad transportation at Red Rock Center for the Arts, 222 E. Blue Earth Ave., Fairmont. Hours: M, Tu, F 10 a.m.-2 p.m.; Th 1-6 p.m. and Sat. 10 a.m.-12 noon. (507)235-9262, redrockcenter@frontiernet.net or www.martincountypreservation.org/

Feb. 3-7 "Twelfth Night", by William Shakespeare at Andreas Theatre, Performing Arts Center, MSU Mankato, Performances are 7:30 p.m. Jan. 28-30 & Feb. 3-6 and 2:00 p.m. on Jan 31 and Feb. 7. For ticket information call the MSU Box office (507) 389-6661, www.mnsu.edu/theatre/

Feb 3-12 "Niale Crop Society presents: The Neo-Classical Niale Crop Exhibiton," recent artifacts found in Niale Crop River Valley, Exhibition in Centennial Student Union Gallery, at MN State University, Mankato. (Lecture in CSU 253 Feb 3, 7:00 p.m. -Gallery Reception to follow lecture) www.mnsu.edu/artdept/exhibitions.htm

Feb. 3-20 Projected Fictions, Recent works by Kristoffer Holmgren, Dustin Price, Jenny Schmid, Amanda Smith, and Erik Waterkotte; at the Carnegie Art Center, 120 S. Broad, Mankato. (Reception: Feb. 6, 7-9 p.m.) Hours: Wed, Fri, and Sat. 1-4 p.m. and Thurs. 1-7 p.m. (507) 625-2730.

Feb. 4 New Ulm Public Library and the Wanda Gag House Association present An Evening With Dave Gehrke, author of "A Shiver Runs Through It", at 7 p.m. New Ulm Public Library, 17 N Broadway. (507) 359-8334. www.newulmlibrary.org.

***Feb. 5** TEAM Academy, charter school presents Minnesota children's author and illustrator Nancy Carlson. Nancy will talk about her books and illustrations at 6:00 p.m. in the Central Intermediate School Auditorium, Waseca. FREE event. Call 507-837-5149 for more information.

Feb. 5 Nolan Robertson, Violinist performing at 7 p.m., as part of the Guest Artist Series at Bethany Lutheran College, 700 Luther Dr., Mankato. *Robertson began his musical career in Mankato at the age of 10, performing with the Mankato Area Youth Symphony Orchestra and the Mankato Symphony Orchestra.* Tickets are \$8/adults and \$5/students and seniors, and may be purchased at the door. Contact the BLC Box Office at (507) 344-7364 or www.blc.edu.

Feb. 6 Wizard of Oz Interactive Movie Party, 1-4 p.m., Creative Play Place, St. Peter Community Center, Room 127, 600 S. 5th St., St. Peter. Check out the NEW imagination station: parent child art 2-3 p.m. (\$2 supplies fee). Call to reserve a spot; drop ins welcome as space allows, (507) 351-4284 or creativeplayplace@yahoo.com

Feb. 6-28 Daniel Forslin, painting exhibit at The School of Art, 329 North Broad Street, Mankato. Hours: Tues., Thur. and Sat. 2:00-6:00 p.m. (Opening Reception: Feb. 6, 6:00-9:00 p.m.) For info. contact the School of Art at 329school.of.art@gmail.com



February 2010 Arts Calendar



Feb. 7 Minnesota River Valley Wind Ensemble, 3:00 p.m. at Halling Recital Hall, Performing Arts Center, 320 Maywood Avenue, MN State University, Mankato. Tickets \$9/General admission, \$6/Other Students & Children/ and MSU students with ID. (507) 389-5549 or www.mnsu.edu/music/events

Feb. 10 Ice Harvest, 9 a.m. – 3 p.m., sponsored by the Waseca County Historical Society and FarmAmerica. Historical reenactment of ice harvesting, area schools will participate. West shore of Clear Lake – the public is invited. (507) 835-7700 or www.historical.waseca.mn.us

Feb. 11 Public Lecture “Music and the Holocaust”, at Wallenberg Auditorium, Gustavus Adolphus College, 800 W. College Avenue, St. Peter. <http://gustavus.edu/finearts>

Feb. 12-14 Singing Valentine, Includes song, rose, picture, Chorus CD -\$40. Phone-A-Gram Feb. 12-14, \$10, Music with dinner Feb.14 evening only. Contact Minnesota Valley Sweet Adelines, 507-388-6148 for information/appointment. <http://www.twinriversarts.org/sweet-adelines.php>

Feb. 13 “Night at the Opera”, Mankato Symphony Orchestra, 7:30 p.m., at Mankato West High School Auditorium, 1351 South Riverfront Drive. Guest artists: Kimm Julian, Dan Dressen and Alisa Pearson. Tickets may be purchased at the Twin Rivers Box Office, 523 South Second Street, Mankato, (507) 387-1008, online at www.twinriversarts.org or www.mankatosymphony.com

Feb. 13 Souper Bowl Fundraiser, Senior Center at the St. Peter Community Center. Buy a hand-thrown bowl for \$10 and have it filled with soup! Enjoy the soup and the bowl is yours to enjoy at home! 11 a.m.–2 p.m. Lunch includes: three delicious soups, bread, cookie. Silent auction. Contact: (507) 931-3630, info@artscentersp.org or www.artscentersp.org

Feb. 13 The AC Circuit Second Saturday, art and culture walk 1–5 p.m., a St. Peter Arts Association event. Special activities at the Arts Center of Saint Peter, 315 S. Minnesota Avenue, contact (507) 931-3630 or info@artscentersp.org

Feb. 13 60th Annual Waseca Sleigh and Cutter Festival, Parade on Feb. 13 at 1:00 p.m., featuring the Jesse James Gang, Cannon Old West Society, and 80+ horse units. For information on their other week long activities go to <http://www.sleighandcutter.org/>

Feb. 13 The Gustavus Wind Orchestra, under the direction of Conductor Douglas Nimmo, return from a 15-day concert tour through Germany, Poland, the Czech and Slovak Republics, Hungary and Austria to present their annual home concert in Christ Chapel. Concert 2:00-4:30 p.m., at Christ Chapel, GAC, St. Peter. (507) 933-7590 or <http://gustavus.edu/finearts>

Feb. 13 Altered Reality, at the Fairmont Opera House. Back by popular demand! Illusionist Reza and magician Dan Sperry take audiences of all ages on a thrilling roller coaster ride of pure mayhem- and entertainment. At the FOH, 45 Downtown Plaza, Fairmont. Tickets: Adults-\$20, Students-\$5, (507) 238-4900 or www.fairmontoperahouse.com

Feb. 14 Valentine Dinner and music by Bill Busse singing songs from the 1930s-1950s, with pianist Sandy Ettesvold and guitarist Marcia Findley, Hawaiian Dinner \$20. Limited seating. Tickets available at HyVee or Red Rock Center for the Arts, 222 E. Blue Earth Ave., Fairmont; (507) 235-9262 or www.martincountypreservation.org

***Feb. 14** Charlie Parr, MSU Music Performance Series Event, 7:30 p.m. at Halling Recital Hall, Performing Arts Center, 320 Maywood Avenue, MN State University, Mankato. Tickets \$15/General admission, \$10/MSU students with ID. (507) 389-5549 or www.mnsu.edu/music/events

Feb. 15 Cuarteto Latinoamericano, Mexico's sensational string quartet, part of the Gustavus Artist Series at Bjorling Recital Hall. Known around the world for their outstanding performances and recordings of the music of Mexico and Latin America, the Cuarteto Latinoamericano brings a blend of Latin American and Western traditions together for this special concert in conjunction with the Gustavus 2010 Global Insight initiative. Tickets are \$20 general/\$17 students, seniors, GAC staff/\$8 GAC students. (507) 933-7590 or <http://gustavus.edu/finearts>

Feb. 15 New Shanghai Circus, sponsored by the New Ulm Area Concert Association, 7:30 p.m., New Ulm Middle School. www.gurtmanandmurtha.com Admission to the four concerts is by membership only, \$35, Students 18 and under \$20. For information on individual tickets call Janet Dempsey (507) 354-5435.



February 2010 Arts Calendar



Feb. 15- April 18 Exhibition of Elmyr de Hory, Artist and Faker, and Focus In/On: Henry Schnakenberg's Dominoes at the Hillstrom Museum of Art, 800 W. College Avenue, GAC, St. Peter. (Reception Feb. 15, 7-9 p.m.) Events are free and open to the public. Hours: 9 a.m. - 4 p.m. weekdays, 1-5 p.m. weekends, (507) 933-7200 or <http://www.gustavus.edu/oncampus/finearts/hillstrom/index.html> The museum will present a Public Lecture: Feb. 28, 3:30 p.m. by Jonathan Lopez, author of "The Man Who Made Vermeers" based on another infamous faker, Han van Meegeren, at Wallenberg Auditorium, GAC, St. Peter.

Feb. 16 The Minnesota Valley Sweet Adelines is sponsoring a guest night for women who love to sing and may be interested in joining the chorus. Meet at 7:30 p.m. at the Fitzgerald Middle School - 110 N. 5th St. in Mankato. Openings are available in all voice ranges and musical knowledge is not necessary to join. The chorus performs regularly at churches, shows and other functions in the area and competes annually with other choruses in the region. For more information call 507-388-6148. <http://www.twinriversarts.org/sweet-adelines.php>

* **Feb. 16** Bothy Folk Club presents Galactic Cowboy Orchestra '60s music at 7:30 p.m., at the Mankato Eagles Club, 708 North Riverfront Drive, Mankato. Tickets are \$12/members and \$15/non-members, (507) 388-1316, paul.lindfors@mnsu.edu or www.bothy.org

* **Feb. 16** Davina and the Vagabonds, Minnesota State Univ. Mankato, Music Performance Series, at Halling Recital Hall, MN State Univ., 320 Maywood Avenue, Mankato; 7:30 p.m. Tickets \$15/General admission, \$10/MSU students with ID. (507) 389-5549 or www.mnsu.edu/music/events

Feb. 18 New Ulm Public Library and the Wanda Gag House Association present An Evening With Nicole Helget, author of "The Summer of Ordinary Ways" and "The Turtle Catcher", at 7 p.m. New Ulm Public Library, 17 N Broadway. (507) 359-8334. www.newulmlibrary.org.

* **Feb. 18** Good Thunder Reading Series presents Aryn Kyle, fiction writer, at MN State University, Mankato. Talk on craft, 3 p.m. at CSU Ostrander Auditorium, 7:30 p.m. Reading in CSU Room 253. (507) 389-1354 or www.english2.mnsu.edu/gt

***Feb. 18** Bunny Just Piano Festival, Armen Donelian, jazz pianist, 7:30 p.m. at Halling Recital Hall, Performing Arts Center, 320 Maywood Avenue, MN State University, Mankato. Tickets \$12/General admission, \$9/MSU students with ID. (507) 389-5549 or www.mnsu.edu/music/events

Feb. 18-March 28 Paintings and Drawings by Bill Bukowski at Ylvisaker Fine Arts Center, Bethany Lutheran College, 700 Luther Dr., Mankato. (Lecture and Reception Feb. 25, 7 p.m.) Gallery hours: Sun.-Thurs. 1-9 p.m., Fri. & Sat. 1-8 p.m. (507) 344-7364 or www.blc.edu/studioart

***Feb. 19-20, 26-28** Curtain Call Theatre will be presenting its dinner theatre production of "Monday Always Leads to Murder" at Hilltop Hall in Montgomery. This is Curtain Call Theatre's fourth show in the series of "Harry Monday" murder mysteries written by Pat Cook. Performances are Feb. 19, 20, 26 & 27 with dinner at 6:15 and curtain at 7:30 p.m. and Feb. 28 with dinner at 12:15 and curtain at 1:30. Pre-paid reservations are required for the dinner and must be received 24 hours in advance. Dinner and show is still only \$25. Dinner reservation can be purchased via our website at www.CurtainCallTheatre.net. Show only tickets are \$10 and will be available at the door.

Feb. 19-21, 26-27 "Patience" by Gilbert and Sullivan at Bethany Lutheran College, 700 Luther Drive, Mankato. Feb. 19, 20, 26 at 7:30 p.m. and Feb. 21 & 27 at 2:00 p.m.; Adults/\$8 and Students and Seniors/\$5; Contact the BLC Box Office at (507) 344-7374 or www.blc.edu.

Feb. 19-21, 26-28 The Musical "Urinetown" at Anderson Theatre, Gustavus Adolphus College, St. Peter. (Feb. 19, 20, 26 & 27 at 8 p.m. and Feb. 21 & 28 at 2 p.m.) Tickets: \$7 adults & \$5 students & senior citizens, Free to GAC students/staff. (507) 933-7590 or <http://gustavus.edu/finearts>

***Feb. 19-March 27** Exhibit of Current Work by Patti Rusky, Mankato, at the Waseca Art Center, 410 N. State Street, Gallery hours: Tues.-Fri. 10 a.m.-4 p.m. and Sat. 10 a.m.- 2 p.m. (507) 835-1701 or www.wasecaartscouncil.org

***Feb. 20** Crescent Community Club, St. James presents Charlie Parr, folk music. Doors open at 7:30 p.m., music starts at 8 p.m. Tickets are \$10 available at the door or St. James Chamber of Commerce. <http://crescentcommunityclub.blogspot.com/>



February 2010 Arts Calendar



* **Feb. 20** The Sound of Simon, A Tribute to Simon & Garfunkel, 7:30 p.m., at the Fairmont Opera House. The Sound of Simon will take you down memory lane with the music of Simon and Garfunkel including hits such as the Sound of Silence, Scarborough Fair, and many more. General Admission all tickets \$18 in advance at the FOH Office, 45 Downtown Plaza, Fairmont, tickets: \$20 at the box office one hour prior to the show. 507-238-4900 or www.fairmontoperahouse.com

***Feb. 20** The Mankato Symphony Orchestra's Family Series, Haydn-Go-Seek, "The Frog", String Quartet No. 41 in D major, 3 p.m., at the Mankato YMCA, 1401 S. Riverfront Drive. Designed for children of all ages, this series will delight and enlighten as children listen and learn about what it really takes, besides inspiration and perspiration, to write such great music. Each concert is designed for short attention spans. www.mankatosymphony.com Tickets are \$5/children and \$10/adults, contact the Twin Rivers Box Office, 523 South Second Street, Mankato, (507) 387-1008, or www.twinriversarts.org

***Feb. 21** Bunny Just Piano Festival, Jay Hershbecker, classical pianist, 7:30 p.m. at Halling Recital Hall, Performing Arts Center, 320 Maywood Avenue, MN State University, Mankato. Tickets \$12/General admission, \$9/MSU students with ID. (507) 389-5549 or www.mnsu.edu/music/events

Feb. 21 Pavia Wind Quintet in Concert, 3:30 p.m., Bjorling Recital Hall, GAC, St. Peter. No ticket required. (507) 933-7590 or <http://gustavus.edu/finearts>

***Feb. 22** Dakota String Quartet, 7:30 p.m. at Halling Recital Hall, Performing Arts Center, 320 Maywood Avenue, MN State University, Mankato. Tickets \$12/General admission, \$9/MSU students with ID. (507) 389-5549 or www.mnsu.edu/music/events

***Feb. 26-28, Mar. 5-6** "The Odd Couple", presented by Merely Players Community Theater at Lincoln Community Center Auditorium, 110 Fulton Street, Mankato. Feb. 26-27 and March 5-6 at 8 p.m. and Feb. 28 at 2 p.m.; Tickets \$14.50/Adults and \$8/Youth. Call 507-388-5483, www.merelyplayers.com, or contact the Twin Rivers Box Office to purchase tickets, 523 South Second Street, Mankato, (507) 387-1008, or www.twinriversarts.org

***Feb. 26-Apr. 4** "GO FIGURE II" paintings by Arnoldus J. Grüter at Arts Center of Saint Peter. Hours: Tues.-Sun.: 1-5 p.m., Thurs.: 1-8 p.m., 315 South Minnesota Ave., St. Peter. Contact: (507) 931-3630, info@artscentersp.org or www.artscentersp.org

***Feb. 27** Jazzfest, 7:30 p.m. at Halling Recital Hall, Performing Arts Center, 320 Maywood Avenue, MN State University, Mankato. Tickets \$15/General admission, \$10/MSU students with ID. (507) 389-5549 or www.mnsu.edu/music/events



COLLEGE ARTS EVENTS

(Check out their websites)



Bethany Lutheran College, Mankato

www.blc.edu Ylvisaker Fine Arts Center Hours: 1-9 p.m., Sun.-Thurs. & 1-5 p.m. Fri.-Sat. (507) 344-7365 Concerts/Plays: (507) 344-7365 for tickets

Gustavus Adolphus College, St. Peter

www.gac.edu Call (507) 933-7598 or 933-7520 for ticket information.

The Hillstrom Museum of Art is open, free of charge, to the public. Gallery Hours: 9 a.m.-4 p.m. weekdays and 1-5 p.m. weekends.

Martin Luther College, New Ulm

www.mlcforum.org
MLC box office (507) 233-9114

Minnesota State University, Mankato

www.mnsu.edu

Dept. of Theatre and Dance (507) 389-6661, www.MSUTheatre.com, www.MSUDance.com

Good Thunder Reading Series 389-1354, www.english2.mnsu.edu/gt

Music Performance Series: 389-5549, www.mnsu.edu/music/events/

Art Department 389-6412, www.mnsu.edu/artdept/exhibitions.html or CSU Student Gallery, 23 Centennial Student Union; Located on the lower level of the Student Union next to the food court.



Arts Opportunities in 2010



Feb. 1-13 The Habitat for Humanity ReStore is asking Artists to design or paint a birdhouse for their annual fundraiser that is being held on March 20, 2010 at the AmericInn in Mankato. Birdhouses are available at the ReStore in Mankato for pick-up to begin the painting process. Each artist will be personally recognized for their work at the fundraiser. Simply e-mail your contact information to Stephanie.menth@hotmail.com or restore@hickorytech.net for more information and to get started!

***Feb. 1-April 5** The Minnesota Shorts Play Festival will be accepting submissions of short plays (15 pages or less) from Jan. 1 to April 5 for its Second Annual short play festival September 9-10, 2010, at the Lincoln Community Theatre in Mankato. Simply e-mail your submission in a pdf or Microsoft Word format to mnshorts@yahoo.com. All winners will receive \$100. For more information, go to <http://mnshorts.tripod.com>.

Feb. 8, 15 & 22 Passion for ART - Watercolor Instructor Bonnie Broitzman returns to Passion for ART for three consecutive Monday evenings, Feb. 8, 15, 22 from 6-9:00 p.m. She will be teaching watercolor snow scenes; and how to capture the allure of shadows in your snow scenes. (507) 833-6061, passion4art@deskmedia.com or www.pfawaseca.com.

Feb. 19 Nonprofit Networking Lunch, Mankato. If you are currently working with a nonprofit in the Greater Mankato area, the Minnesota Council of Nonprofits invites you to join this free, informal discussion and information-sharing group 12 noon - 1:00 p.m. at the Blue Earth County Historical Society. Free, open to all, and no RSVP is necessary. Please bring your lunch, business cards, questions, and ideas. For info. contact Amy Jo at amy@mncn.org or www.mncn.org



Prairie Lakes Regional Arts Council Board Members and Staff

Row 1 (L to R): Brenda Flintrop, Pat Potzler, Marie Kreft, Nancy Willette & Cindy Lewer. **Row 2** (L to R): Mary Jenatscheck, Denice Evers, Judie Ziemke & Rachael Hanel. **Row 3** (L to R): Sharon Turner, Don Myers & Bette Traxler.

** Photo of board courtesy of Timothy Madsen.*

Prairie Lakes Board of Directors

Blue Earth County Rachael Hanel
 Brown County Denice Evers
 Faribault County Lill Robinson
 LeSueur County Bette Traxler
 Martin County Rochelle Franzen
 Nicollet County Don Myers
 Sibley County Marie Kreft
 Waseca County Mary Jenatscheck
 Watonwan County Gloria Eager

City of Fairmont Sharon Turner
 City of Mankato Judith Ziemke
 City of New Ulm Judy Martins
 City of North Mankato ... Pat Potzler

Staff

Executive Director Brenda Flintrop
 Program Manager Cindy Lewer
 Administrative Assistant.. Pam Trumbull

Arts Centers, Galleries and Classes

Art Center of Saint Peter, 315 S. Minnesota Avenue. Monthly exhibits, an extensive variety of children, youth, and adult art classes and clay classes are offered at www.artscentersp.org/classes. Contact (507) 931-3630, info@artscentersp.org or claycenter@artscentersp.org. Registration for all Arts Center and Clay Center classes is through St. Peter Community Education, 500 S. Fifth Street, www.stpetercommunityedonline.com or (507) 934-3048.

For St. Peter all-community arts event information go to <http://www.stpeterarts.org/>

Carnegie Arts Center, 120 S. Broad, Mankato. Artist studios, monthly exhibits and a unique Gift Shop featuring original art work by local artists. Gallery hours: Wed., Fri. and Sat., 1-4 p.m. and Thurs. 1-7 p.m. (507) 625-2730

The Children's Museum of Southern Minnesota, Madison Avenue Mall, Mankato. Come to Madison East to explore The Amazing Castle now through May 9th. The museum is open for The Amazing Castle traveling exhibit: on Wed. from 9 a.m.-12 noon, Fri. 4-7 p.m., Sat. 10 a.m.-4 p.m. and Sun. 12 noon-4 p.m. Family memberships start at \$35. Contact Peter Olson, 507-995-2242, peter.olson@cmsouthernmn.org or <http://www.cmsouthernmn.org/>

Emy Frenz Arts Guild Building-Twin Rivers Center for the Arts, 523 South Second Street, Mankato. Artist studios, gallery space, and new Ticket Box Office for arts events in Mankato. Gallery hours: Mon., Tues., Wed., and Fri. 10 a.m. – 4 p.m. and Thur. 1-7 p.m. Contact (507) 387-1008, info@twinriversarts.org or www.twinriversarts.org

Greater Mankato Arts Events website:
Link to www.greatermankatoevents.com

Lifeworks Visual Arts Studio, 1806 Commerce Drive, North Mankato. Art Opportunities for people with developmental and physical disabilities. Contact Kristi or Carrie at (507) 625-7522.

Mankato Community Education will offer a variety of ARTS Classes in 2010 You can view the Program Guide at www.mankatocer.com and look under "Adult Enrichment", or call (507) 387-5501. Classes are held at Lincoln Community Center, Mankato East H.S., or the Emy Frenz Arts Guild.

Passion for ART, 210 North State Street, Waseca. Fun & Free Thursdays: 1st and 3rd Thursday each month, meet local artist and learn new techniques, 2-6 p.m. (507) 833-6061, passion4art@deskmedia.com or www.pfawaseca.com.

Red Rock Center for the Arts, 222 E. Blue Earth Ave., Fairmont; Hours: T, Th, F, 10 a.m. - 3 p.m. and Wed. 1-6 p.m. or call to set up an appointment. Each Tuesday is Lunch with the Arts: Noon-12:45 p.m. "Come & Go", enjoy various types of artistic performers, bring your lunch and relax in a beautiful setting. (507) 235-9262 or www.martincountypreservation.org.

Stones Throw Gallery, 420 N. Minnesota Ave., St. Peter, (507) 934-5655. Hours: 11-5 pm. Monday through Saturday, and by appointment. Features the work of many local artists. To browse individual artists' work and learn more about the artists and the Gallery, go to www.stonestrowgallery.org/

The 410 Project, 523 South Front Street, Mankato. Monthly exhibits, Hours: Wed., Thur., Fri., Sat. 2-6 p.m., Sun. 1-4 p.m. the410project@yahoo.com

The School of Art, Gallery and Instruction, 329 North Broad Street, Mankato (at the Wesley Building). New facility with gallery space, studio space and classes. A variety of art classes for youth are offered, call for details (507) 227-3708 or (507) 380-7947.

Waseca Art Center, 401 N. State Street, Waseca. Monthly exhibits, Wednesday Group Meetings: 9:00-10:30 a.m. Drawing & Painting; and 11-11:45 a.m. Art Appreciation Discussion. (507) 835-1701, patbeckmann@wasecaartscouncil.org or www.wasecaartscouncil.org.

PLEASE SEND US YOUR EMAIL ADDRESS

We will primarily be contacting artists and organizations by email, in order to reduce our postage costs. This applies to grant applications, final reports, art exhibition and notifying you when a new newsletter is posted to the website at www.plrac.org

**To be added to our mailing list call
1-800-298-1254 or email:
plrac@hickorytech.net**

Chamber of Commerce & City Websites By County

Several Chambers of Commerce and Cities in our region have community and arts calendars on their websites. Individuals can become more connected and aware of events by referring to these websites. Organizations and groups may also be able to list their events. Please contact them for more details.

Blue Earth County

Greater Mankato Area: www.greatermankatoevents.com

Lake Crystal Chamber of Commerce:
www.lakecrystalchamber.com

Brown County

New Ulm Chamber of Commerce: www.newulm.com
(click on Chamber of Commerce)

Sleepy Eye Chamber of Commerce:

www.sleepyeyechamber.com

Springfield Chamber of Commerce:

www.springfieldmnchamber.org

Faibault County

Blue Earth Chamber of Commerce:

www.blueearthchamber.com

Wells calendar: www.wells.govoffice.com

Winnebago calendar: www.winnebago.govoffice.com

LeSueur County

Elysian calendar: www.elysianmn.com

LeCenter calendar: www.cityoflecenter.com

LeSueur Chamber of Commerce:

www.lesueurchamber.org

New Prague Chamber of Commerce:

www.newprague.com

Waterville Chamber of Commerce:

www.watervillemn.com

Martin County

Fairmont Chamber of Commerce:

www.fairmont.org/chamber/home.htm

Nicollet County

Nicollet Chamber of Commerce: www.nicollet.org

St. Peter Chamber of Commerce:

www.tourism.st-peter.mn.us

Sibley County

Arlington Community Bulletin Board:

www.arlingtonmn.com

Henderson Chamber of Commerce:

www.hendersonmn.com/chamber/index.php

Waseca County

Janesville calendar: www.janesville.govoffice.com

Waseca Area Tourism & Visitors Bureau:

www.discoverwaseca.com

Waseca Chamber of Commerce:

www.wasecachamber.com

Watsonwan County

Madelia calendar: www.madeliamn.com

St. James Chamber of Commerce:

www.stjameschamberofcommerce.com



Prairie Lakes Newsletter

You can submit Arts Calendar Information for activities happening in Blue Earth, Brown, Faribault, LeSueur, Martin, Nicollet, Sibley, Waseca & Watsonwan Counties.

Mail to Prairie Lakes Arts Council, 207 N. State Street, Suite A, Waseca, MN 56093-2930, or email information to plrac@hickorytech.net.

This Newsletter will also be posted on our home page: www.plrac.org and we anticipate providing quarterly newsletters in 2010.

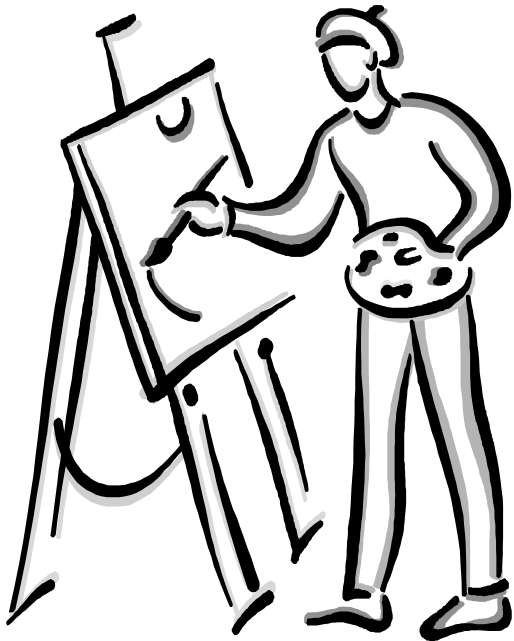
2010 GRANT DEADLINES

Arts-In-Education & Small Arts Project - \$500

The deadlines are February 1
and March 1, 2010 or
until funds are exhausted.

All Grant Applications are available on our website **www.plrac.org** as both a Word document and a PDF file. If you prefer to receive a copy in the mail please contact our office at 1-800-298-1254.

The Prairie Lakes Regional Arts Council serves a nine-county area including Blue Earth, Brown, Faribault, LeSueur, Martin, Nicollet, Sibley, Waseca, and Watsonwan Counties.



18TH ANNUAL PRAIRIE LAKES REGIONAL JURIED ART EXHIBITION

Entry Date: **April 16, 4-8 p.m.**

All types of visual art, watercolor, oil, drawings, ceramic, glass, sculpture, jewelry and textiles will be considered for the exhibition. Participation is open to all artists age 16 and over residing in the nine count area: Blue Earth, Brown, Faribault, LeSueur, Martin, Nicollet, Sibley, Waseca or Watonwan County.

Entry Fee is \$10 (\$20 for 2 pieces). Limit of 2 pieces per artist. Entry Forms will not be mailed this year and can be printed off the PLRAC website, plrac.org, starting in February, 2010.

GALLERY HOURS: WED., FRI. &
AT. 1-4 P.M. AND THUR. 1-7 P.M.

Opening Reception:
Sunday, May 16, 1-3 p.m.

Artists - Bring original work to:

**Carnegie Art Center
120 S. Broad, Mankato**

Dates of Show:
April 28 - June 10, 2010

School Bus Stipends Available to Prairie Lakes Regional Art Exhibition

*Teachers, have you ever thought about taking
your students on a field trip to see an art exhibit?*

Wouldn't it be great if you could expose them to about 100 drawings,
paintings, mixed media and sculpture, all in one exhibition?

April 28-June 10, 2010
Carnegie Art Center, Mankato



Schools are invited to bus children, grades 3-12 for a field-trip to see the 18th Annual Prairie Lakes Regional Art Exhibition, Mankato. Prairie Lakes has funds available to provide bus stipends of up to \$125 for schools to visit the exhibition. For information, contact the PLRAC office. Stipends are available on a first come, first served basis.

There are fourteen days available (Wed., Thurs. and Fri.) for schools to tour the exhibition: April 28, 29, 30, May 5, 6, 12, 13, 14, 19, 20, 21, 26, 27, or 28, 2009.

If you are interested in attending, please request an application from the PLRAC office .