

2nd Annual PLRAC/McKnight Artist Grantee Exhibition

Featuring Fellowship Grantees
from 2010
Funded by the
McKnight Foundation



 Arts Center of Saint Peter

315 South Minnesota Avenue

Gallery Hours:

Tuesday through Friday 11 a.m.–6 p.m.

Saturday & Sunday 1–5 p.m.

January 13–February 12, 2012
Opening Reception: January 14, 2–4 p.m.

Prairie Lakes Regional Arts Council

We are pleased to present the second Annual Artist Grantee Exhibition funded by the Prairie Lakes Regional Arts Council (PLRAC) and the McKnight Foundation, Minneapolis. This group exhibition features the ten artists that received a Fellowship Grant of \$3,000 in 2010. We are pleased to present this exhibition at the Arts Center of Saint Peter, from January 13 to February 12, 2012.

The Opening Reception will be Saturday, January 14 from 2–4 p.m., with a 2:30 p.m. program. “We are pleased to use the Arts Center of Saint Peter for the exhibit and the gallery is perfect because it has two levels and can accommodate over 40 pieces of art work,” noted Brenda Byron, PLRAC Executive Director. **The Prairie Lakes Regional Arts Council has a 20-year history of funding Individual Artists with grants with funding provided by the McKnight Foundation, Minneapolis.** We began Individual Artist Grants in 1992 and five artists were awarded \$500 project grants. The program has developed over the years and the amount and number of grants has increased based on funding from the McKnight Foundation. A total of 201 Artist Grants have been awarded from January 1992 through November 2011.

In 2012 Prairie Lakes will continue to award \$1,000 Emerging Artist Grants each year and Fellowship Grants of \$3,000 each. In addition, we will be supporting the 20th Annual Prairie Lakes Regional Juried Art Exhibition, to be held at the Carnegie Art Center, Mankato on April 26–June 8, 2012. This exhibition is an opportunity for emerging and professional artists living in the 9-county area to display their work in a professional setting. The regional exhibition features over 90 pieces of art work.

We share in the McKnight Foundation’s goals to support and develop our communities by supporting high quality art that is broadly accessible. We continue to focus our McKnight grants on support of our professional artists in the region through an emerging artist and fellowship program and juried regional art exhibition. The regional arts council truly believes that our individual artists are at the heart of all arts activity. The council and staff believe that technical assistance, grants, and networking amongst our artists and arts organizations is crucial to the region's arts development. We have a vibrant arts community in south central Minnesota that plays an important role in community development and the economic development of our region. The arts enrich each one of our lives.

PLRAC serves the nine county area in south central Minnesota. We provide programs for the development of the local artists, arts organizations and art audiences. The council administers several grant programs with funds appropriated by the Minnesota State Legislature and the McKnight Foundation. **In FY 2011 Prairie Lakes awarded 195 arts grants totaling \$381,510.** Total grants of \$65,110 in general State funds, \$39,000 in McKnight grants, and \$277,400 in Arts and Cultural Heritage (ACH) grants. The three categories of ACH funding and the amounts awarded were: (1) Arts & Arts Access \$218,625, (2) Arts Education \$44,695 and (3) Arts & Cultural Heritage \$14,080.

Exhibiting Artists

Pamela Bidelman, St. Peter

Faceless: Head Study I, Mixed Media, \$325
Faceless: Head Study II, Mixed Media, \$325
Faceless: Head Study III, Mixed Media, \$325
Flat Sculpture, Oil on Aluminum, NFS
Subcutaneous, Acrylic matt medium and acrylic, NFS

Cheryl Casteen, Mankato

AI, Digital Photography, \$450
Jeanna, Digital Photography, \$450
Jill Swann, Digital Photography, \$450
Keeliann, Digital Photography, \$450
Keeliann & Glenn, Digital Photography, \$450

Denise Friesen, North Mankato

Black Eyed Susan, Monotype, \$650
Evening Light, Prairie, Monotype, \$950
In the Stream, Monotype, \$650
The Moon Rises at Sunset, Monotype, \$950
Yellow Cottonwood Leaf in Blue Water, Monotype, \$950

Michael Jorgensen, St. Peter

Michael is a baritone vocalist and will perform at the opening reception 1/14/2012

Mika Negishi Laidlaw, Mankato

Circle of Life, Slip-cast porcelain, \$1,200
Correlations 1, Slip-cast porcelain, \$1,000
Correlations 2, Slip-cast porcelain, \$1,000
Correlations 3, Slip-cast porcelain, \$1,000
Correlations 4, Slip-cast porcelain, \$1,000

Lois Peterson, St. Peter

Boat on River, Oil Sticks, \$350
Fish House, Oil Sticks, \$800
House on River, Oil Sticks, \$300
Skin Boat # 1, Oil Sticks, \$350
Winter River # 1, Oil Sticks, \$300

Patti Ruskey, Mankato

Broken, Acrylic and drawing ink on canvas, \$525
Cradle to Grave, Acrylic, oil stick, drawing ink on canvas, \$675
Milk Money, Mixed Media on paper, \$425
The First Deception, Acrylic, drawing ink, collage on canvas, \$525
The Red Thread, Acrylic, oil stick, collage on canvas, \$675

Todd Shanafelt, Mankato

Far too blue, Earthenware, flocking, decal, stainless steel, NFS
Fleeting attempt, Earthenware, decal, stainless steel, NFS
L'Enverse, Earthenware, flocking, decal, stainless steel, NFS
Standing and seating, Earthenware, decal, stainless steel, NFS
Suffocation Observation, Earthenware, decal, stainless steel, NFS

Janice Tanner, Janesville

Bird, Book 8 x 11, NFS
Bird Over Moon, Mixed Media Painting, \$1,350
Catch the Morning I, Mixed Media Painting, \$1,200
Catch the Morning II, Mixed Media Painting, \$1,500
Sunrise, Mixed Media Painting, \$1,800

Brad Widness, North Mankato

13 Moons (Jon Olseth), Accordion book structure with drum-leaf binding, cotton-rag papers, NFS
Outside from Inside - soul and periphery, 3D hand-pulled print 'box' and accompanying sequenced images, \$600
Places-location-recall-forward-a journey, Accordion book structure with multiple zine structures, NFS
Rilke's Space #2 - time, space, things in-between, Pamphlet stitch book and binding, \$700
To Sibley and back-interiors and outer edge, 3D Z-fold structure with panels onto a stage, \$600

This is the second Annual Artist Grantee Exhibition funded by the Prairie Lakes Regional Arts Council and the McKnight Foundation, Minneapolis. It represents 10 artists that were awarded Fellowship Grants of \$3,000 each in 2010. Below is an alphabetical list of artists describing their background and how they used their funding.

Pam Bidelman is a self-taught artist who lives and works in St. Peter. She graduated from the University of Minnesota with a Master of Social Work degree and continued to work as a clinical social worker until her retirement. During those years she began to pursue her goal of producing credible art. Inspired and supported by other artists in the area, she learned to draw and paint, and finally, show her oil paintings in local and metro venues. A PLRAC/McKnight Emerging Artist grant in 2005 set the foundation for a number of solo and group exhibitions in St. Peter, Mankato, Waseca, Owatonna, and Minneapolis. Pam is known as a painter whose work has focused on themes related to the internal lives of women through simple forms and dramatic use of color. As a recipient of the PLRAC/McKnight Fellowship, Pam has worked for the past year with a professional conceptual artist-teacher, Cheryle Melander, M.F.A., Minneapolis College of Art and Design, to shift to new themes, media, and presentation. Pam characterizes the experience as difficult, extremely challenging, and extraordinarily rewarding. The new work evolved in unexpected ways and with unexpected methods and media. The pieces are investigations of the fragility of the vessel of skin as it shields the inner physiology and experience of 'being' as it intersects with the outer environment.



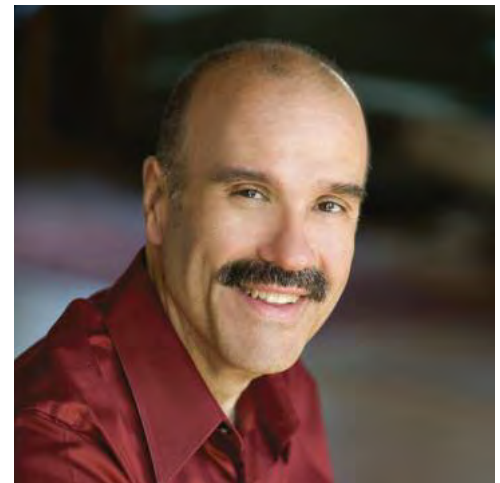
Cheryl Casteen is a multi-media artist living in Mankato, Minn. She teaches in the Art Department at Minnesota State University, Mankato. Cheryl received her M.F.A. from Carnegie Mellon University in Pittsburgh, Penn., her B.F.A. from the Corcoran School of Art in Washington, D.C., and a B.S. in Art Education from Andrews University, Mich. Cheryl has developed performances and public art projects in Maryland, Minnesota, Pennsylvania, Virginia, Washington, D.C., and West Virginia, as well as internationally in New Zealand, Russia, and Germany. Cheryl has worked as an art educator since 1987, concurrently with creating and exhibiting her work. Over the years, she has participated in panels about art, and served as visiting artist at high schools and art schools. She currently is co-director with Lois Peterson at Gallery 720, in St. Peter's Locust Street Hotel and runs her own photography business, called Like This, Inc. The work developed with the PLRAC/McKnight Fellowship focuses on photographic collaborations between artist and sitter. It deals with performed identities and the ways in which we wish to be seen.



Denise Friesen writes “my life intertwines with the river. I have always lived where the waters meet, the transition zone between Prairie and Woods near the confluence of the Blue Earth and Minnesota Rivers in Mankato. Flowing flooding rivers are a part of my earliest memory. My art reflects my fascination with water, the ebb and flow, the wild spring floods. Changes and edges, transitions are all a part of my relation to the river. I have never been able to leave the valley for long, exploration of its large and small wonders keep me here. Projectartfornature.org has been a part of my life for more than ten years. Project Art for Nature (PAN) is a collaboration of artists and illustrators from Minnesota and Wisconsin working independently and collaboratively to create and exhibit artwork, promoting stewardship of threatened natural areas in Minnesota and Wisconsin. My work is inspired by the Kasota Prairie Scientific and Natural Area, and the Unimin Kasota Prairie as well as my own 20 wooded acres bordering the Big Cobb River, a small river flowing in the Minnesota River Watershed. The sites include prairies, wetlands, rivers, and woods. My newest inspiration comes from the privately owned prairies that I am helping to restore with the Many River’s Chapter of the Prairie Enthusiasts near Mankato. My art is Monotype. Monotype is a painterly printmaking method in which I paint an image on a plate and using the pressure of my printing press transfer the image to paper creating the final artwork or monotype. The PLRAC/McKnight Fellowship allowed me to create and frame a large body of work that captures the essence and spirit of the places that inspired each image.”



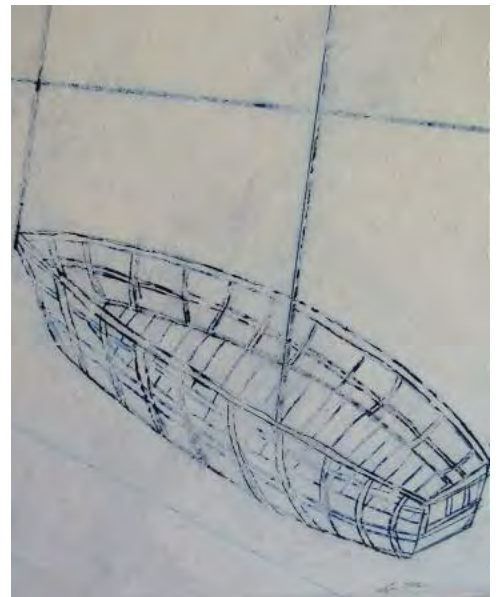
Dr. Michael Jorgensen recently performed at the October 2011 Nobel Concert, where he presented songs by living composers from Minnesota, and singing the world premiere of Libby Larsen’s *Turn, Turn*, commissioned by Gustavus Adolphus College for its Sesquicentennial. Other recent solo performances include Mahler’s *Lieder eines fahrenden Gesellen* in the Bridge Music Festival at St. Olaf College in Northfield, Minn.; baritone soloist in excerpts from Orff’s *Carmina Burana* with the Metropolitan Chorale in Waterloo, Iowa; bass soloist in Bach’s “Coffee Cantata” (*Schweigt stille, plaudert nicht*) for the 2010 Nobel Concert; and a CD Release Concert at Gustavus with Bonnie Jorgensen, David Jorgensen, and Dr. David Klee. Additional recent performances include Brahms’ *Requiem* at the College of St. Catherine’s in St. Joseph, Minn.; Mozart’s *Requiem* at Macalester College in St. Paul, Minn.; and Bach’s *St. John’s Passion* at Normandale Lutheran Church in Edina, Minn. In many years as a bass singer with the VocalEssence Ensemble Singers of Minnesota Jorgensen soloed in world premiere works by composers Francis Grier, Steve Heitzeg, and Libby Larsen, and soloed under conductors John Rutter, Helmuth Rilling, and Nicholas McGegan, as well as singing the solo *An die Musik* by Schubert on Garrison Keillor’s *Prairie Home Companion*. Michael serves as a Professor of Music at Gustavus Adolphus College where he has taught voice and other music-related courses since 1991. He is the current holder of the Ethel and Edgar F. Johnson Professorship in the Fine Arts. The PLRAC/McKnight Fellowship that Michael received enabled him to commission new music for baritone and piano by Timothy Berry, Todd Harper, and Steve Heitzeg, as well as compensate other performers in the October 2011 concert. All three composers attended the performance.



Mika Negishi Laidlaw was born and raised in Kobe, Japan, and first came to the U.S. as a high school exchange student. Mika is a ceramic artist with her studio in Mankato, Minnesota, where she lives with her husband Les and two small children. Mika teaches as an Associate Professor of Art at Minnesota State University, Mankato. She earned her B.A. in Studio Art from Southern Illinois University at Edwardsville in 1994. From 1994 to 1997, she worked as a ceramic apprentice at Akishino Pottery in Nara-City, Japan, and studied traditional pottery under Masaya Imanishi. In 2000, she received her M.F.A. in Ceramics from Kansas State University where she met her lifetime mentor Yoshiro Ikeda. Some of her accomplishments include; recipient of 2001 McKnight Artist Residencies for Ceramic Artist at Northern Clay Center, Summer Artist Residence at the Archie Bray Foundation for the Ceramic Art in 2003, and 2004 Emerging Artist at the annual conference of National Council on Education for the Ceramic Arts (NCECA) in Indianapolis, demonstrator of 2006 NCECA in Portland, Ore., and recipient of 2011 and 2006 McKnight Fellowship for Ceramic Artists. She exhibited nationally and internationally including, Japan, Korea, Taiwan, Guam, and Spain. The PLRAC/McKnight Fellowship funded Mika to create a body of ceramic sculptures working with subjects such as her grandfather's complex end of his life, her grandmother's progressing dementia, and parental unconditional love. It allowed her to purchase raw materials including clay and glaze chemicals, and also to experiment with mixed-media materials.



Lois Peterson received her undergraduate degree in Art Education from University of Wisconsin-LaCrosse and her M.F.A. from Texas Tech University, where she studied with Verne Funk. Following graduate school Lois taught at Pacific Lutheran University in Tacoma, Washington before joining the Department of Art/Art History at Gustavus Adolphus College in Saint Peter, Minn., where she has served as a Professor of Art for the past 23 years. Lois maintains and works in her studio in Saint Peter, Minnesota. She has always been drawn to landscapes that are mostly void of visual variety. She is drawn to a simplicity and uniformity, such as the open plains of the Dakotas and the ice pack of the Arctic, where recently she saw the skin boats, waiting for sealskins to be stretched over their frames, these inspired one of the drawings in the exhibition. The boat frames seemed poetic, perched on stilts above the white ground, waiting to be used again for the whale hunt, they represented a fragment of a story well known to the local community. Lois exhibits her work nationally in solo and group exhibitions and has received grants from the Blandin Foundation and the McKnight Foundation to support her personal work and to develop community art programs. Her drawings are done primarily with oil sticks on a variety of drawing surfaces. The PLRAC/McKnight Fellowship was used for the framing of drawings, transportation of work to exhibitions and for improvements to her studio.



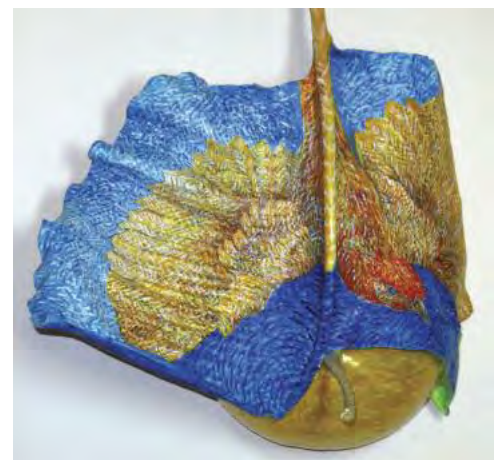
Patti Ruskey is a self-taught artist that has been creating and showing works in Southern Minnesota for the past ten years. Patti received two PLRAC/McKnight Emerging Artist grants from Prairie Lakes in 2000 and 2003. "Using a mixed media approach on paper or canvas I strive to layer experiences with emotion. My work has been described as visually confrontational. However, I describe it as honest and thought provoking. The PLRAC/McKnight Fellowship has provided resources for new materials to create artworks and an opportunity to reach a wider audience through a scheduled 2013 exhibit at the Bloomington Art Center. As part of this fellowship I also created 49 works of art available for trade that was exhibited at the 410 Project in Mankato during September 2011."



Todd Shanafelt received his M.F.A. in Ceramics from Kansas State University and B.A. in Visual Arts from the University of Northern Colorado. He is an Associate Professor of Art at Minnesota State University, Mankato. "I'm interested in the juxtapositions found imbedded in our civilizations as we seemingly continue to ignore what errors we have made in the past as we continue to spiral faster and faster towards what we feel is better technology, better lives, better conveniences, better stuff, better whatever. Somehow, these feelings were mingled into my processes and allowed to voice their own narratives as they were lightly prodded to perform with their new and unusual surroundings and orientations. The future that we are leaving for our posterity is incredibly obscure, for good and bad. I cannot make work anymore without that thought entering my mind as I raise my own children and think of their future world. I would like to think of myself as an optimist, but I am deeply affected by horrific events and practices to humanity and the natural world that take place on a daily basis—and our incredible ignorance, thus the title of my Prairie Lakes Regional Arts Council exhibition, as it happens." The PLRAC/McKnight Fellowship was used to create new work for this exhibition.



Janice Tanner received her M.A. degree in Studio Arts from the University of Minnesota, Duluth and her B.S. degree in Art Education from Minnesota State University, Mankato. She has been living and working in this region for several years. Her work is inspired and informed by the wild aliveness of the natural environment that surrounds her rural home. The content of this body of work reflects the ideas and intuitions gathered from a more detailed study of bird movement in the landscape. Much time was spent behind the camera capturing bird motion in a bird's complex environment. This visual information was used to help shape the form and the painted surface. The act of seeing with or without the camera has been very energized. "The camera has helped me to search and identify the mystery and magic that is nature and the bird became a way to focus the study. It is a very rich and productive experience from all viewpoints. The PLRAC/McKnight Fellowship was used to purchase a SLR digital camera and lens and painting supplies



Brad Widness received his M.F.A. in Printmaking/Drawing from Northern Illinois University and his B.A. in Visual Arts from Augustana College, in South Dakota. "I am an active artist, draughtsman, and printmaker in south central Minnesota where I live, teach, and maintain my studio practice. I have had work in an extensive number of exhibitions, collections, and portfolios from regional and national to international. My work has steadily evolved into numerous expressions of the relationship between object, space and memory; the connections between the intangible and tangible realities of a life lived, yet deeply reflected upon. The continuous process of visually questioning, creating, exploring, destroying, editing, and eventual remaking of space, matter, and form into some meaningful expression of this 'connection' has constantly fueled my practice. With the 'image and text' book, I feel the expression of this 'connection' to be more engaging of the actual spirit and mystery that lies at the core of our daily human existence. Thus, the key reason behind the pursuit of such a change in the current direction of my work. The PLRAC/McKnight Fellowship funds have helped tremendously in the taking of course work in new media techniques and processes involved in creating the text and image elements needed. They have also enabled the acquisition of tools and materials for the exploration of new studio processes related to print and book art creation, combining complex digital imagery and typography with hand created forms of visual expression."



Board Members

Blue Earth County	Dr. Gina Wenger, Mankato
Brown County	Denice Evers, Springfield
Faribault County	Lill Robinson, Blue Earth
LeSueur County	Bette Traxler, LeCenter
Martin County	Bonnie Taplin, Fairmont
Nicollet County	Melanie Schmidt, North Mankato
Sibley County	Paula Scheffler, Henderson
Waseca County	Sara Krassin, Waseca
Watonwan County	Joe McCabe, St. James
At-Large	Greg Wilkins, Mankato
City of Fairmont	Judy Berkeland
City of Mankato	Mary Motter
City of New Ulm	Mary Jane Glawe
City of North Mankato	Pat Potzler

Staff

Brenda Byron	Executive Director
Cindy Lewer	Program Manager
Pam Trumbull	Administrative Assistant



207 N. State St., Suite A, Waseca, MN 56093
 (507) 833-8721 or (800) 298-1254
 plrac@hickorytech.net • www.plrac.org